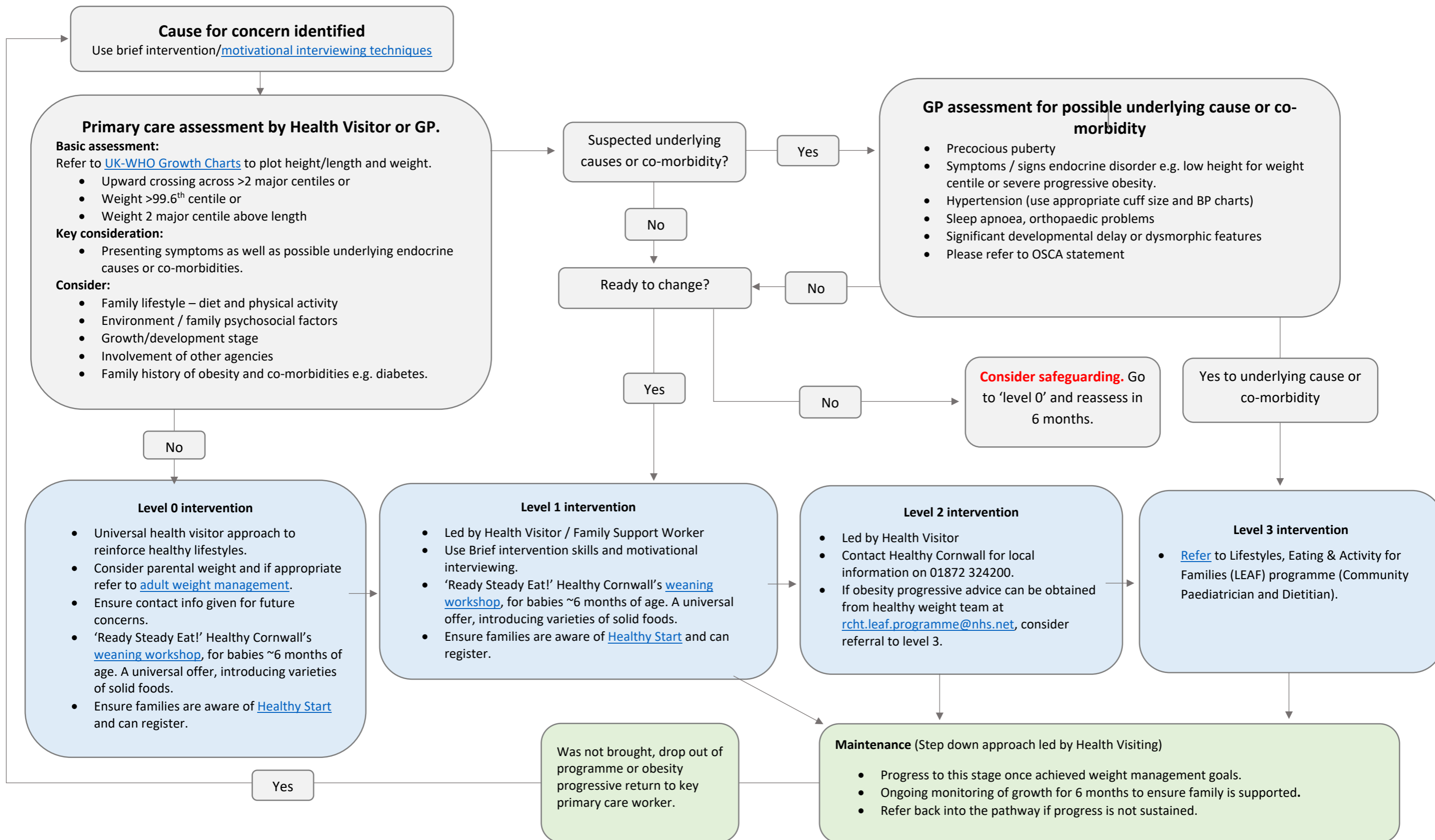


Cornwall and IoS Healthy Weight Care Pathway for Children 0-23 months



Safeguarding children: Childhood obesity alone is not a safeguarding issue. However, throughout this pathway, be aware of or suspect neglect or abuse as a contributory factor to or cause of obesity in children. Abuse may also coexist with obesity. If you are concerned contact the Multi Agency Referral Unit (MARU) on 0300 123 1116. The [CIOS Threshold Tool](#) can support you to identify the most appropriate service response.